

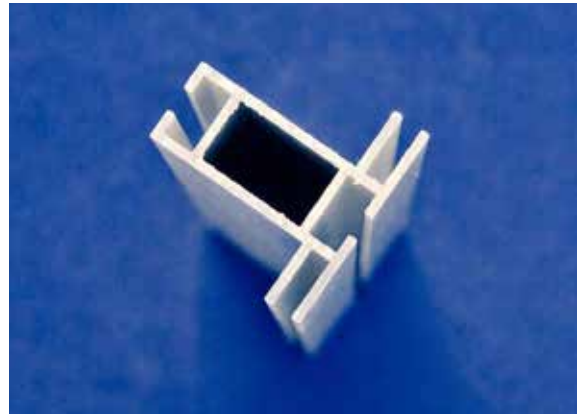


catalystgraphics

.....
**Profile &
Fixings**
.....



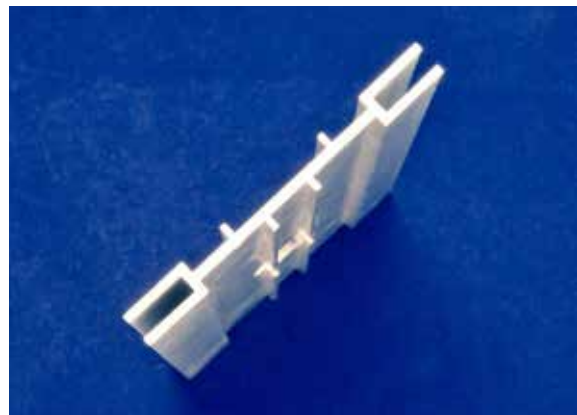
CAT 1
Size 40x24mm - Supplied in 5m lengths



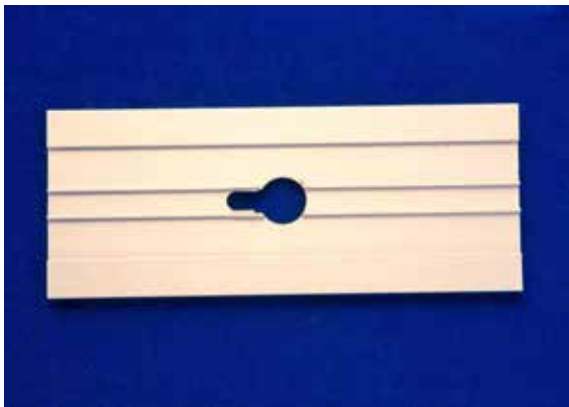
CAT 2
Size 40x40mm - Supplied in 5m lengths



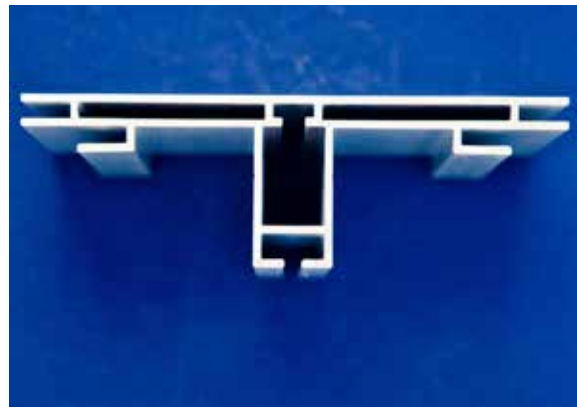
CAT 3
Size 40x16mm - Supplied in 5m lengths



CAT 4
AP4 Profile - End View



CAT 4

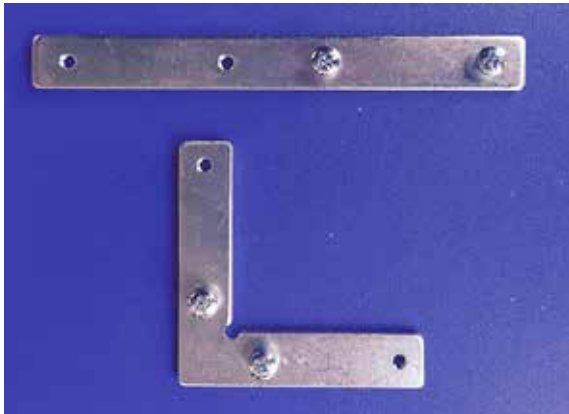


Cat 5



catalystgraphics

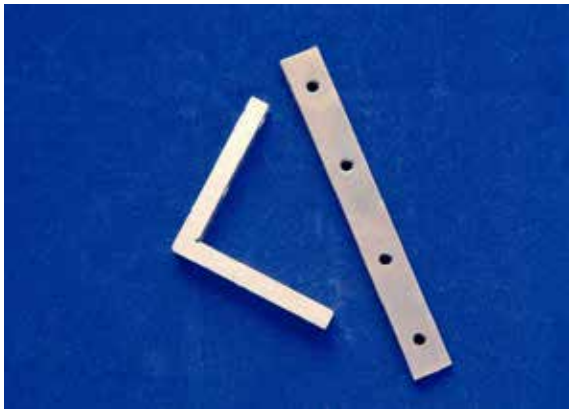
.....
**Profile &
Fixings**
.....



CORNER & STRAIGHT JOINERS
For CAT 1



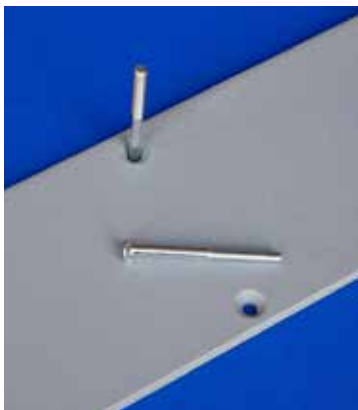
CORNER JOINER
CAT 1



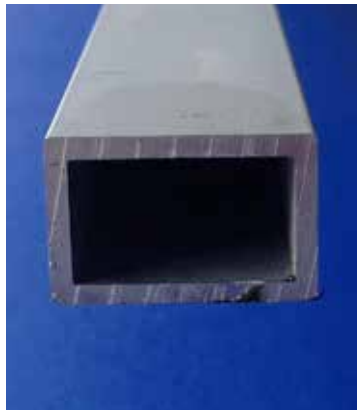
CORNER & STRAIGHT JOINERS
For AP1, AP2 & AP3



STRAIGHT JOINER
For CAT 1



METAL FOOT PLATE
Size 500 x 1000mm -
Powder Coated Finish



FABRIX Support Bar V2120
25 x 16mm supplied 5m lengths
Designed to take Standard Lock



FABRIX Support Bar V2120
25 x 16mm supplied 5m lengths
Designed to take Standard Lock